



LIFTING HANDS COMMUNITY EMPOWERMENT INITIATIVE



ORGANISATION PROFILE

**Kangulumo Zone A,
Namutumba Town Council
P.O BOX 46, BUSEMBATYA**

Website: www.lihacei.org
Email: lifthandcommun@gmail.com
Tel: +256786216291/+256200993256



LIFTING HANDS COMMUNITY EMPOWERMENT INITIATIVE

Lifting Hands Community Empowerment Initiative (LIHACEI) is a Ugandan non-profit dedicated to fostering sustainable development by empowering communities to drive their own progress. Recognizing that systemic barriers often hinder local potential, the organization works to strengthen existing assets rather than replace them.

By collaborating with local stakeholders, government entities, and the private sector, LIHACEI provides support in health, education, economic development, and social protection. Their core strategy, the **“Community Ripple Model,”** focuses on equipping individuals with the skills and leadership tools to become catalysts for change, ensuring that their impact multiplies across families and institutions. Ultimately, LIHACEI seeks to create a future where every individual can lead a healthy, dignified, and productive life.

OUR PHILOSOPHY

We believe sustainable development begins with people.

Communities are not passive beneficiaries of aid—they are leaders, innovators, and problem-solvers. The most effective and enduring solutions are those designed and owned by the communities they serve.

Rather than creating parallel structures, we strengthen existing systems, build local capacity, and promote collaboration across communities, government, civil society, and the private sector. We believe that when people are empowered with knowledge, opportunity, and leadership, they create lasting change that extends far beyond individual interventions.

Community



OUR STORY

At LIHACEI, we believe that everyone deserves the opportunity to live a healthy, productive, and dignified life. Yet millions of people continue to face preventable barriers to healthcare, education, and economic opportunity due to systemic inequities, weak community systems, and limited access to essential services.

We founded LIHACEI in response to a simple but urgent reality: lasting change happens when communities are empowered to lead it. While many interventions focus on treating symptoms, we work to address the underlying social, economic, and systemic factors that drive poor health and development outcomes.

Our approach strengthens community-led systems that bring health, education, and social support closer to the people who need them most. We work alongside communi-

ties, governments, health workers, schools, and development partners to improve maternal and child health, advance cancer and non-communicable disease prevention and care, expand educational opportunities, and build resilient communities capable of driving their own development.

By combining local leadership, evidence-driven action, strategic partnerships, and sustainable capacity strengthening, we help transform systems from the ground up—ensuring that solutions are not only effective, but equitable, locally owned, and built to last.

LIHACEI is more than an organization; it is a catalyst for healthier lives, stronger communities, and a future where no one is left behind.

VISION:

A world where systemic barriers are dismantled by the people they once held back.

MISSION:

To provide the infrastructure, resources and inspiration for communities to turn ground-up ideas into systemic realities

CORE VALUES – I CARE PLUS

I – Integrity

We act with uncompromising honesty, openness, and ethics in every decision, interaction, and undertaking.

C – Compassion

We place people at the heart of all we do, treating every individual with empathy, dignity, and respect.

A – Accountability

We are careful custodians of the resources entrusted to us and answerable to the communities, partners, donors, and stakeholders we serve.

R – Respectful Collaboration

We pursue lasting change through genuine partnerships, collective effort, and mutual respect.

E – Equity & Justice

We champion fairness and inclusion, working to dismantle systemic obstacles that keep people and communities from reaching their full potential.

P – Proximity

We stay close to the communities we support, listening to their voices, learning their realities, and co creating solutions that reflect their priorities and dreams.

L – Local Leadership

We empower communities to steer their own development, investing in local leadership, ownership, and agency for sustainable impact.

U – Unity

We build solidarity and shared responsibility, recognizing that real progress emerges when individuals, institutions, and partners unite around a common purpose.

S – Stewardship

We manage resources, relationships, knowledge, and opportunities responsibly, maximizing impact, cultivating trust, and ensuring long term sustainability for present and future generations.



WHY WE EXIST

Around the world, millions of people continue to face preventable barriers to good health, quality education, decent livelihoods, environmental sustainability, and social protection. Rising burdens of communicable and non-communicable diseases, maternal and child mortality, educational inequalities, unemployment, climate change, and weak community systems continue to widen social and economic disparities.

Traditional development approaches often address immediate needs without strengthening the systems that sustain long-term change. Communities frequently remain excluded from decision-making, limiting local ownership and the sustainability of interventions.

LIHACEI exists to change this reality.

We strengthen community-led systems that bring healthcare, education, economic opportunities, and social support closer to the people who need them most. By investing in local leadership, strengthening institutions, generating evidence, and fostering partnerships, we help communities become resilient, self-reliant, and capable of shaping their own futures.

OUR MANDATE

LIHACEI is mandated to strengthen community systems that improve the quality of life of vulnerable and underserved populations. We promote equitable access to healthcare, education, child protection, sustainable livelihoods, environmental stewardship, research, advocacy, and institutional development through community-led, evidence-based, and sustainable interventions.

Our mandate emphasizes prevention, systems strengthening, capacity development, innovation, and local ownership as essential drivers of lasting social change

OUR GOAL

Our overarching goal is to contribute to the development of healthy, educated, economically empowered, protected, and resilient communities where every individual has equitable access to opportunities and the capacity to thrive.

Specifically, we aim to:

- Improve access to quality, people-centered healthcare.
- Expand access to equitable and inclusive education.
- Promote child protection, safeguarding, and social inclusion.
- Strengthen household livelihoods and local economic development.
- Build resilient institutions and empowered communities.
- Generate evidence that informs policy and practice.
- Promote environmental sustainability and climate resilience.
- Foster partnerships that accelerate sustainable development.



OUR APPROACH:

THE COMMUNITY RIPPLE MODEL **Learn. Lead. Share. Multiply.**

Our Community Ripple Model is founded on a simple belief: when one person is empowered, they can empower many others.

Rather than limiting impact to direct programme beneficiaries, we intentionally create multiplying cycles of knowledge, leadership, and opportunity. Every individual reached through our programmes is encouraged and supported to transfer what they have learned to others within their families, workplaces, schools, and communities.

This “Pay It Forward” approach creates ripple effects across five interconnected levels:

- Individuals gain knowledge, confidence, and agency.
- Families become healthier, more supportive, and economically stronger.
- Communities develop stronger networks of care, collaboration, and opportunity.
- Institutions become more responsive, accountable, and effective.
- Systems evolve through stronger policies, partnerships, and resource allocation.

By embedding leadership and ownership within communities, the benefits of our work continue long after individual projects have ended.

ORGANISATION DETAILS

ADDRESS

Kangulumo Zone A, Namutumba Town
Council Namutumba District - Uganda
P.o. Box 46, Busembatya

CONTACT

website: www.lihacei.org
Email: lifthandcommun@gmail.com
Tel: +256200993256/+256786216291

STATUTARY REGISTRATION DETAILS

Uganda Registration Services Bureau (URSB)

REG NO: 80020002744862

Uganda Revenue Authority (URA)

REG NO: 1017666518

CERTIFICATE OF REGISTRATION

Certificate issued on: 19-10-2020 17:17 , No: BRS-INCC-5-20/45495



Registration No: 80020002744862



THE REPUBLIC OF UGANDA
THE COMPANIES ACT

Certificate of Incorporation

(Under section 18(3) of the Companies Act 2012)

I CERTIFY that LIFTING HANDS COMMUNITY EMPOWERMENT INITIATIVE LTD (Limited by Guarantee)
has this day been incorporated with Limited Liability.

Dated at Kampala, this 19th day of October the year 2020.

UGANDA REGISTRATION
SERVICES BUREAU



Signature: LILIAN ABALO

Registrar of Companies

Printed on 15:05:39 25-11-2020



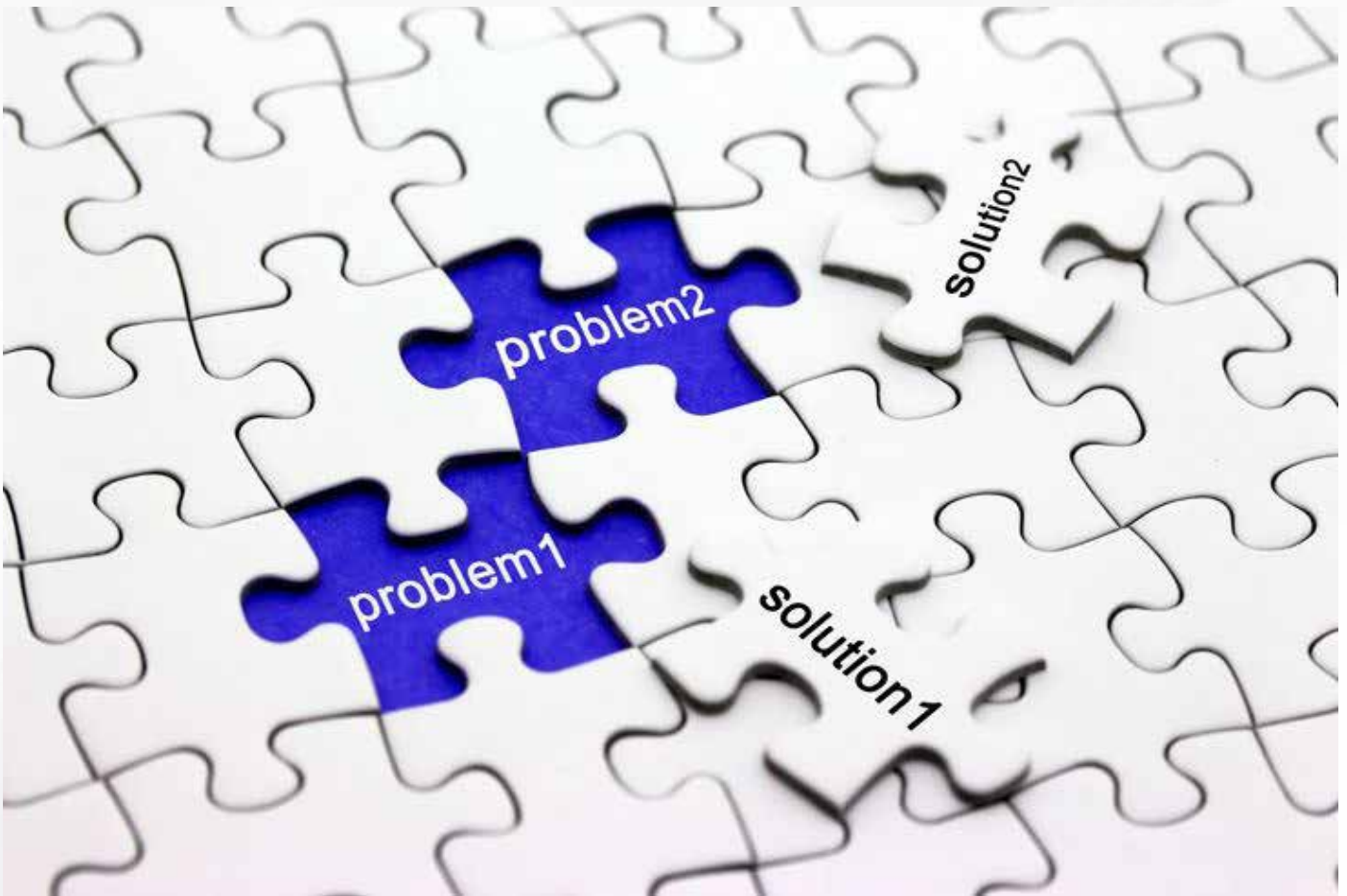
OUR FOCUS AREAS

- Health
- Education
- Economic Empowerment

OUR STRATEGIC INTERVENTIONS

We implement integrated, evidence-driven interventions that strengthen systems and empower communities through:

- Community health systems strengthening.
- Health promotion and disease prevention.
- Education and lifelong learning.
- Entrepreneurship and local economic development.
- Child protection and safeguarding.
- Institutional capacity strengthening.
- Research and knowledge generation.
- Policy advocacy and citizen engagement.
- Environmental sustainability and climate adaptation.
- Innovation and digital transformation.
- Strategic partnerships and resource mobilization



CROSS-CUTTING INTERVENTIONS

Across all our programmes, LIHACEI integrates cross-cutting themes that ensure equitable, inclusive, and sustainable development.

These include:

- ⦿ Gender Equality and Social Inclusion (GESI)
- ⦿ Child Protection and Safeguarding
- ⦿ Human Rights-Based Programming
- ⦿ Community Leadership and Participation
- ⦿ Youth Engagement
- ⦿ Disability Inclusion
- ⦿ Climate Change Adaptation
- ⦿ Innovation and Digital Transformation
- ⦿ Research, Learning, and Knowledge Management
- ⦿ Monitoring, Evaluation, Accountability, and Learning (MEAL)
- ⦿ Partnership and Collaboration
- ⦿ Localization and Systems Strengthening



OUR GUIDING PRINCIPLES

Our work is anchored in four principles:

- ⊙ **Community Leadership:** Communities are leaders and partners in development.
- ⊙ **Systems Strengthening:** Sustainable impact comes from strengthening existing systems rather than creating parallel ones.
- ⊙ **Evidence-Driven Action:** We combine local knowledge with research and data to deliver measurable and sustainable results.
- ⊙ **Sustainability:** We invest in solutions that communities can own, maintain, and scale.

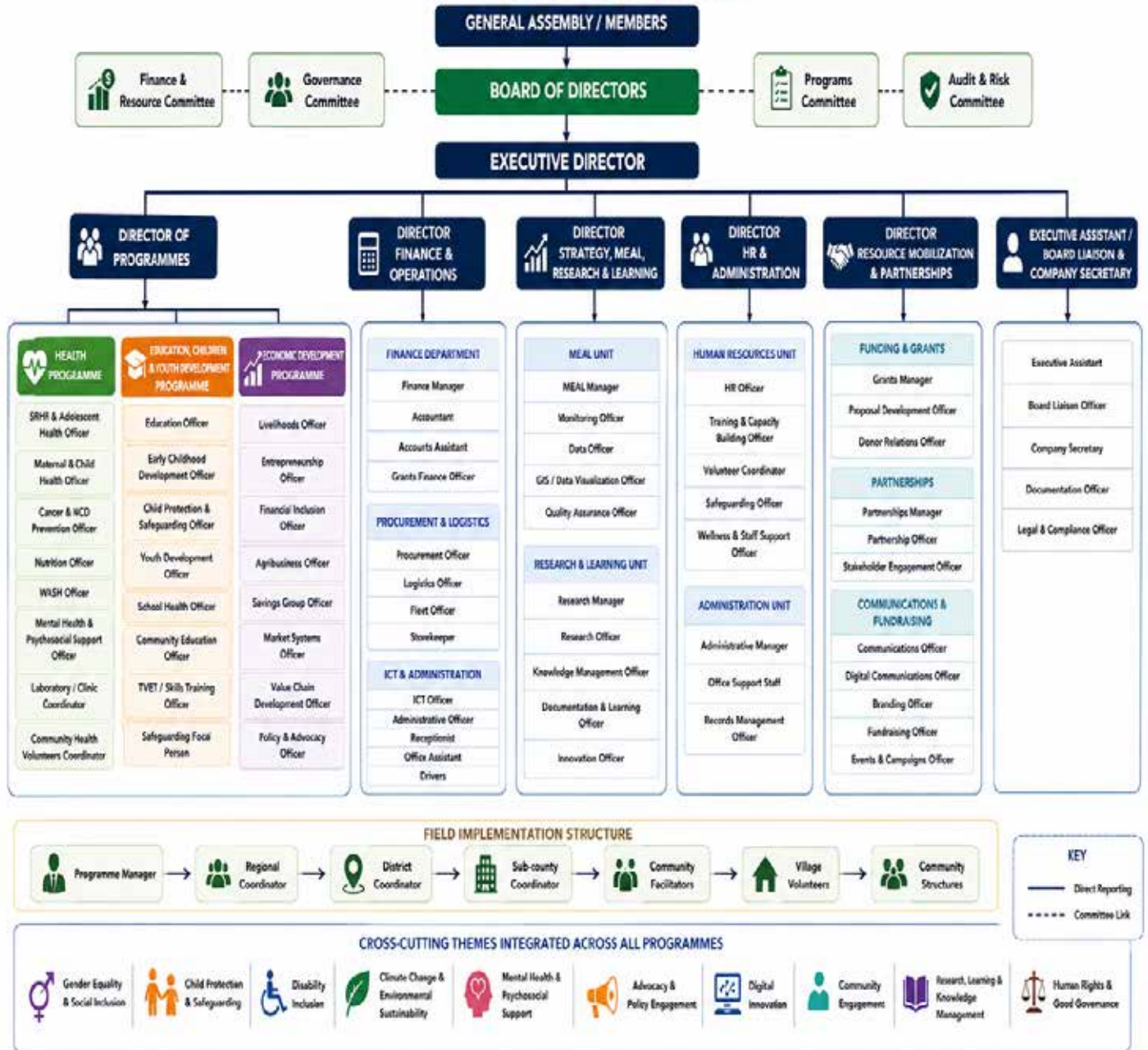
OUR COMMITMENT

At LIHACEI, we do not simply implement projects — we strengthen systems, cultivate local leadership, and create conditions that enable communities to thrive. We believe communities already possess the knowledge, relationships, and potential needed to transform their futures. Our role is to unlock those strengths, connect opportunities, and support communities to lead lasting change.

Together with governments, development partners, civil society, academia, the private sector, and communities themselves, we are building a future where every person has the opportunity to live a healthy, educated, productive, and dignified life — and where no one is left behind.

ORGANISATIONAL STRUCTURE

LIFTING HANDS COMMUNITY EMPOWERMENT INITIATIVE (LIHACEI) ORGANISATIONAL STRUCTURE



MANAGEMENT TEAM



KIWAGAMA GEOFFREY FOUNDER AND DIRECTOR

Geoffrey Kiwagama is a professional nurse, nonprofit leader, and social entrepreneur driven by a singular mission: to dismantle systemic health inequities. Drawing on his extensive frontline experience at the intersection of clinical care and underserved populations, Geoffrey founded the Lifting Hands Community Empowerment Initiative (LIHACEI).

Under his leadership, this youth-led organization bridges the gap between formal healthcare systems and marginalized communities in Uganda. By focusing on adolescents and young women, LIHACEI delivers rights-based, evidence-driven interventions that break down barriers to care, education, and economic stability. Geoffrey's expertise which spans strategic planning, grant management, and health advocacy is rooted in the belief that every individual, regardless of geography or economic status, deserves the opportunity to thrive. Through LIHACEI, he continues to champion community-led solutions that strengthen public health and foster long-term socio-economic resilience.



**KAYAGA MARTHA
ADMIN AND HUMAN RESOURCE**

Kayaga Martha is a highly organized and efficient Administrator with two years of experience in executive support and high-level office management. A graduate of Kyambogo University with a Bachelor's degree in Public Administration and Resource Governance, she brings a unique blend of formal administrative expertise and entrepreneurial leadership to every role. As the Co-founder of the Lifting Hands Community Empowerment Initiative, she has proven her ability to oversee organizational growth, manage complex logistics, and optimize resource allocation. Her core strengths include proactive executive support, meticulous record-keeping, and the financial acumen required to manage petty cash and operational budgets in fast-paced, high-stakes environments. I am deeply committed to combining professional administrative discipline with a community-driven approach to drive operational excellence.



NABIRYE MELAN, OUR FINANCIAL STRATEGIST.

Nabirye Melan is the driving force behind our financial success. By blending meticulous oversight with visionary planning, she helps us navigate the complexities of a competitive landscape with ease. Nabirye excels at distilling raw data into actionable insights, turning fiscal management into a competitive advantage. Her leadership ensures that our financial strategy is not just a support function, but a catalyst for our growth. Nabirye's expertise is backed by a strong academic foundation, including a Bachelor's in Business Administration (Uganda Christian University), an MBA (Makerere University), and CPA (Level 2) certification.

OUR PARTNERS AND MEMBERSHIP



THE REPUBLIC OF UGANDA
MINISTRY OF HEALTH



unesco

Member of Associations
and Clubs for UNESCO



NAMUTUMBA DISTRICT

Local Government

